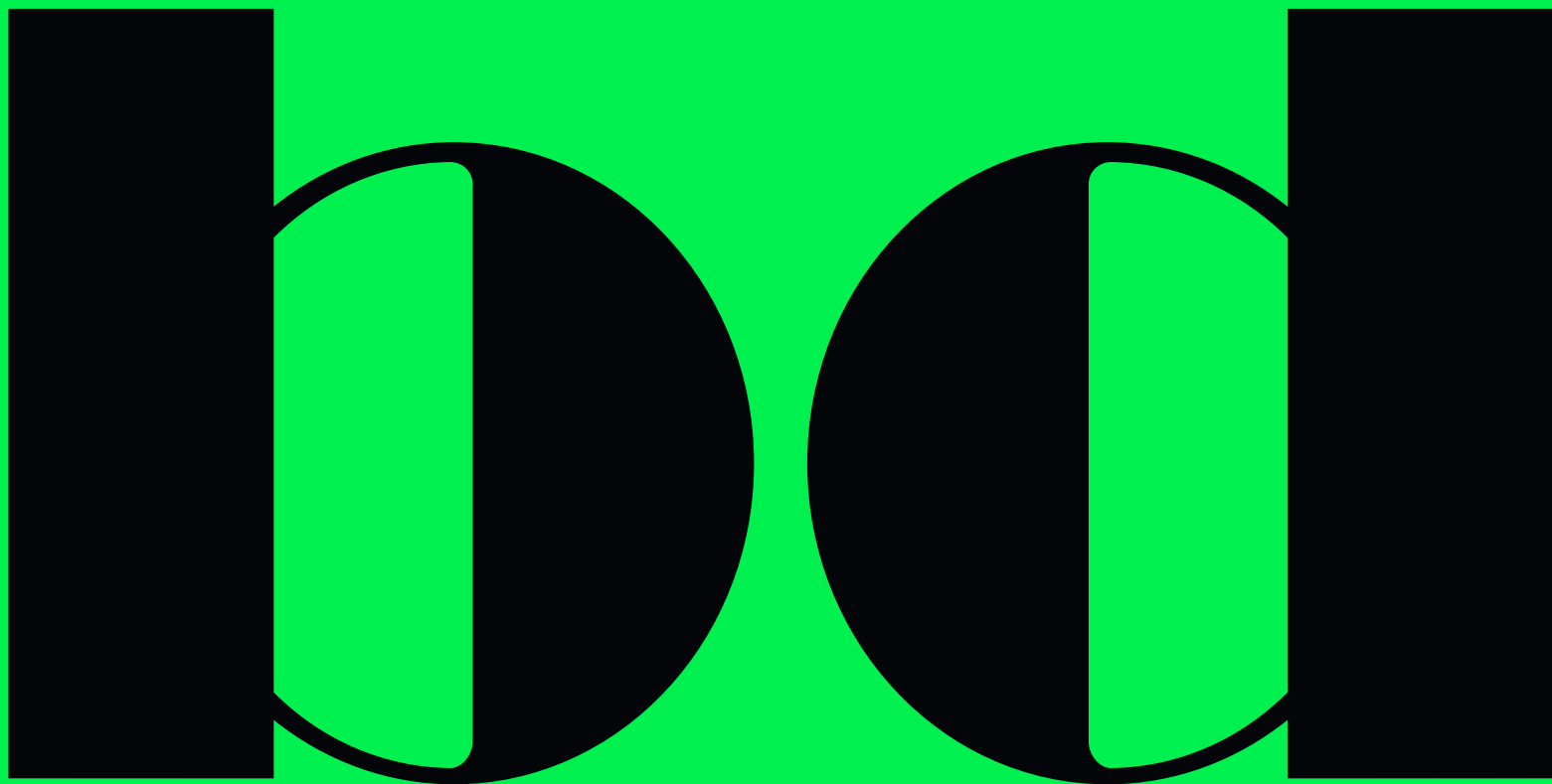


PILLOW FINISHES



SCALA (ELASTRON)
REF CAT 1

COMPOSITION
100% Polyester

WIDTH
143

WEIGHT
386

CIGARETTE REISTANCE
Pass

ANTI-SATIN

ABRASION TEST
> 80.000

PILLING
3-4

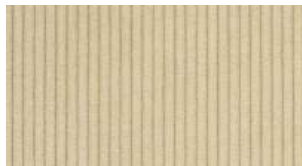
COLOUR FASTNESS ARTIFICIAL LIGHT
ISO 105-B02: 5

COLOUR FASTNESS TO RUBBING
ISO 105-X12
Dry 5
Wet 5

WASHING CONDITIONS



Example: SC40 - SAND



SC88 - NATA



SC40 - SAND



SC01 - YELLOW



SC69 - LIMA



SC51 - CORAL



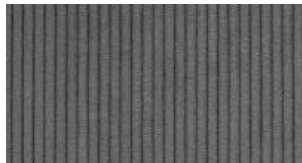
SC53 - RED



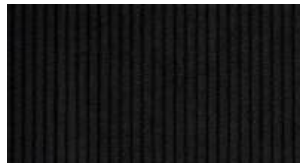
SC15 - SKY



SC57 - FOREST



SC45 - ASH



SC25 - BLACK



VORTICE (ABITEX)
REF CAT 2

COMPOSITION
100% acrylic (water repellent)

WIDTH
160

WEIGHT
260

DYEING
Solution dyed product

ROLL LENGHT
Approx. 50 lm

COLOR FASTNESS TO LIGHT
7/8, ISO 105 B02

FASTNESS TO RUBBING
dry 4/5, wet 5, ISO 105 X12.

FIRE RESISTANCE
California TB 117-2013
NFPA 260 Class 1

WASHING CONDITIONS



Example: VO102- BEIGE



VO102- BEIGE



VO300 - GARNET



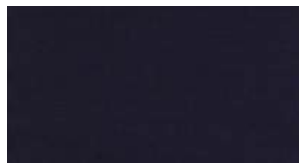
VO500-YELLOW



VO503 - MUSTARD



VO603 - DARK GREY



VO702 - DARK BLUE



VO705 - LAVENDER BLUE



VO706 - NAVY BLUE



VO800 - FOREST GREEN



VO804 - GREEN TEA



RAINBOW (JAB)*
REF CAT 4
PILLOW

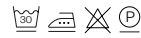
COMPOSITION
100% Cotton

MARTINDALE
20.000 cycles

WIDTH
140 cm

HEIGHT
55"

WASHING CONDITIONS



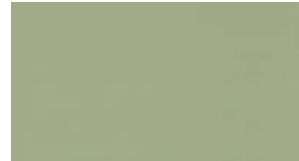
Example: RA38 - WHITE WINE



RA41 - ARENA SOL



RA38 - WHITE WINE



RA33 - PALE GREEN



RA35 - OLIVE GREEN



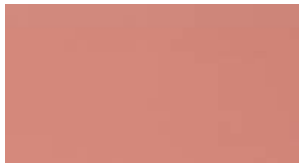
RA56 - FRENCH BLUE



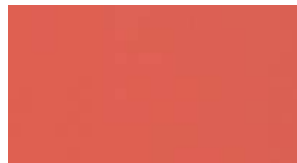
RA53 - ARIEL BLUE



RA55 - NAVY BLUE



RA67 - BRUSH PINK



RA68 - CORAL



RA11 - RUBY RED

*This fabric is exclusively designed for the "Pillow Sofa" product. Please note that it is a highly delicate material and requires careful handling to maintain its quality and appearance. Use and cleaning instructions must be followed strictly to avoid damage.



TEMPO (MAHARAM)
REF CAT 6

COMPOSITION
100% Polyester

WASHING CONDITIONS



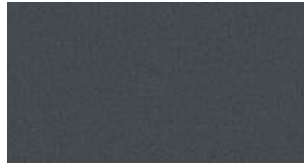
MARTINDALE
100.000 cycles

WIDTH
140 cm

WEIGHT
700 gr/lm



Example: TE09 - ADORNMENT



TE02 - GRANDSTAND



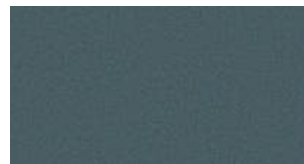
TE04 - BATTLESHIP



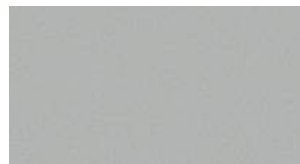
TE07 - SWIMMING



TE08 - AMBIENCE



TE09 - ADORNMENT



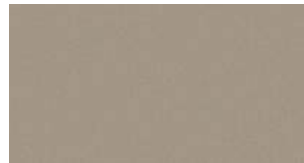
TE11 - FANG



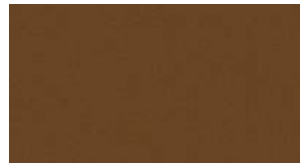
TE15 - FARMLAND



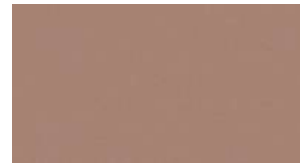
TE20 - GAZELLE



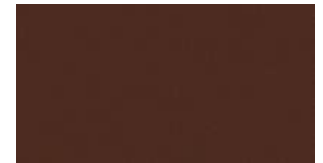
TE21 - SHITAKE



TE22 - FLAXSEED



TE24 - FLOWERY



TE25 - BURGUNDY



TE27 - PETUNIA



TE28 - CAMPSITE



FLORIDA
REF F

RECOMMENDED FOR
Contract use

COMPOSITION
Raw hide leather (corrected grain)
through dyeing aniline

TEAR RESISTANCE
>20N (UNI EN ISO 3377-1)

CRACK RESISTANCE
50.000 Cycles (UNI EN ISO 5402)

DRY RUB FASTNESS
1.000 Cycles Vol. >4 Grey scale
(UNI EN ISO 11640)

LIGHT FASTNESS
Vol. >6 Blue scale
(UNI EN ISO 105-B02)

FIRE TEST
BS 5852-0 - BS 5852-1
BS5852 ORib5 (optional)
UNI EN 1021-1
UNI EN 1021-2
NFPA 260/UFAC
California TB 117 Section E -AB-2998



Example: F65 - GREEN



F10 - BLACK



F15 - CAMEL



F54 - WHITE



F65 - GREEN



F61 - BROWN



F66 - TAUPE GREY



CONTACT

HEADQUARTERS

C/ de Ramon Turró, 126,
08005 Barcelona, Spain

SALES & ENQUIRES

sales@bdbarcelona.com

BD Barcelona, 2025.

All rights reserved. No part of this publication
may be reproduced in whole or in part without
the permission of the publisher.

View our products at bdbarcelona.com

Follow us: [@bdbarcelona](https://twitter.com/bdbarcelona)

