

Tense Material stone

Designer	Piergiorgio Cazzaniga, Michele Cazzaniga
Year	2016-2026



Tense Material Stone combines the signature lightness of the Tense collection, designed by Piergiorgio and Michele Cazzaniga, with the authentic character of reconstructed stone and coccioperla finishes. In the first version, the mineral blend of marble and quartz creates distinctive nuances, making each table unique. The minimal design and elegant silhouette make them ideal for every setting and style, from the most classic to modern and contemporary interiors, while the soft, smooth texture enriches the tactile experience. In the coccioperla variant, mother-of-pearl fragments add luminous reflections to the surfaces, creating a delicate play of light that enhances their formal purity and presence within the space. In both cases, the manual application of the finishes makes each table a unique piece, combining material research, technical precision, and a natural, timeless elegance. The wide range of sizes and the possibility of adding up to two top-access units and an under-surface cable tray make Tense Material Stone suitable for a broad range of uses, including work activities, easily transforming into a desk or workstation when needed.

Frame

Steel legs with a 35x35 mm section and internal structural tie-rod. The 35 mm thick tabletop is a load-bearing composite board built with an internal frame consisting of either aluminium profile and polystyrene filler.

Coccioperla

Coccioperla is a material mix obtained from a mixture of mortar, aggregates and crushed mother-of-pearl. The spatula application process is entirely manual over the entire table surface and produces a unique texture that makes each product distinctive both to the eye and to the touch.

Note: visual irregularities, nuances, a lack of uniformity of both surface and material colour are deemed traits of value and uniqueness.

Reconstructed stone

Textured finish obtained from a blend of mineral powders that have been micronised and mixed with liquid acrylic and water-based products, giving it a material essence. The finishes are applied manually with a palette knife over the entire surface of the table, followed by a maturation process at room temperature. The material is subsequently protected with a water-based nanotechnological finish that makes the table sturdy and easy to clean. Top, edges and legs covered with the application of a thickness of about 1.5 mm of material.

Note: visual irregularities, nuances, a lack of uniformity of both surface and material colour are deemed traits of value and uniqueness.

Top-access

The tables are also available in the version equipped with 1 or 2 top-access and under top cable tray. The top-access is available in three versions: single lead with soft closing, double lead or optional, the single lead with soft closing, with inlay in the same finish of the table.

The metal cable trays are telescopic (H7/H10 cm), to host various wiring systems.

Tense Material stone finishes

Top/Structure

Reconstructed stone

Reconstructed stone Serena X084
Reconstructed stone white calce X131
Reconstructed stone black slate X132
Reconstructed stone yellow onyx X133
Reconstructed stone pink onyx X134
Reconstructed stone red brick X160
Reconstructed stone sage green X161

Coccioperla

White coccioperla X202
Cream coccioperla X203
Dove grey coccioperla X204
Black coccioperla X205

Tense Material stone dimensions

H110		high table bar/office
H90		high table, high working table
H73		dining table, working table
H45		coffee table
H35		low table

D80

140	160

D90

180	200	220	240

D100

100	200	220	240	260	280	300

D120

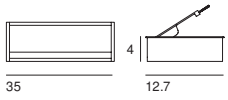
120	240	260	280	300	360	400

D150

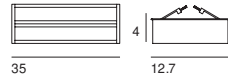
150	200	240	300	360	400

Top-access

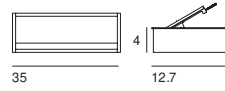
Single lead with soft closing
(version A)



Double lead (version B)

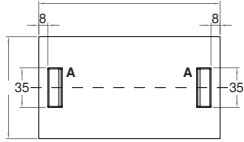


Single lead with soft closing, with
inlay matching with the finish of the
table (C version).

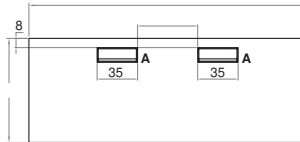


Position of the top-access

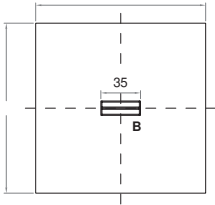
With one or two lateral top-access



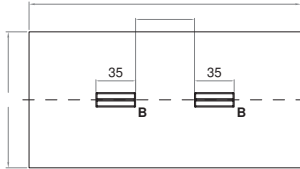
With two front top-access



With one central top-access

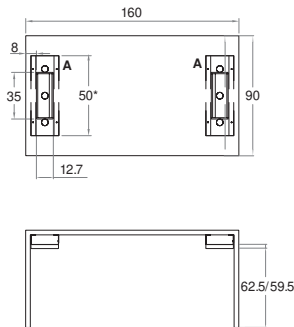


With two central top-access



Example of top-access and metal wireway position

With one or two lateral top-access
*L60 for tables greater than D90



With two front top-access

